

Teste a snodo SA BEM06-60-501-DURBAL - BEM06-60-501-DURBAL

<https://www.123cuscinetti.it/cuscinetti-supporti/teste-snodo/sa/bem06-60-501-durbal>

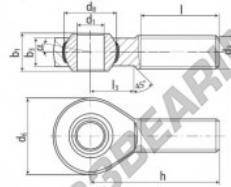
BEM06-60-501



male thread;
maintenance free,
adapter sizes
according to
DIN ISO 12240-4,
series K



**DURBAL® heavy-duty rod ends
with integral spherical
plain bearing in stainless steel**



rod end housing:
stainless steel 1.4301, rolled thread,
surface with pickling treatment

joint ball:
stainless steel, hardened and ground,
surface superfinished

race:
nylon / teflon / glass fibre compound

tolerances:
see page 10

order number		measurements [mm]		measurements [mm]		measurements [mm]			
type	right-hand thread	left-hand thread	d ₁	d ₂	d ₃	d ₄	b ₁	b ₂	
BEM 06 -60	-501		6	M 6	20	12,65	9	6,75	
measurements [mm]		weight		basic load rating		dyn		stat.	
type	h	l	l ₃	α ₁ ¹ [°]	α ₂ ² [°]	[kg]	C	C ₀	C ₁₀
BEM 06	36	22	12		13,0	6,5	0,020	2820	4900

CARATTERISTICHE DEL PRODOTTO

Marchio	DURBAL
N° Ean13	3663952509693
Diametro interno	6 mm
Diametro esterno	20 mm
Spessore	9 mm
Tipo	SA
Peso	20 g
Il filo	Filetto destro
Lubrificazione	senza
Imballaggio	1

contatto@123cuscinetti.it

+33 3 59 36 04 90

CRT4 de Lesquin 60 Rue Du Haut De Sainghin 59273 Fretin FRANCE