

Teste a snodo SI SI22-PK-DURBAL - SI22-PK-DURBAL

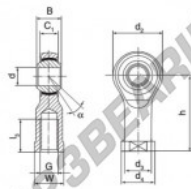
<https://www.123cuscinetti.it/cuscinetti-supporti/teste-snodo/si/si22-pk-durbal>

SI22-PK



female thread;
maintenance free,
according to
DIN ISO 12240-4,
series K

Description: DIN ISO rod end K series. Sliding combination steel / bronze-PTFE composite.



rod end body:
surface case plated

Sliding combination:
steel / bronze-PTFE composite

inner ring:
bearing steel hardened and ground

Outer ring:
rod end body pressed around, outer race
lined with bronze-PTFE composite

Lubrication:
maintenance free

order number	d	G	measurement (mm)	B	C1	d2	d4
SI 22 PK	22	M 22 x 1,5	28	20,00	55	30,0	38

type	l ₁ min	W	h	α [°]	load rating C ₀ (kN)	weight (kg)
SI / SIL 22 PK	37	32	84	15	68,00	0,540

CARATTERISTICHE DEL PRODOTTO

Marchio	DURBAL
N° Ean13	3663952492247
Diametro interno	22 mm
Diametro interno	0.866" inch
Diametro esterno	55 mm
Diametro esterno	2.165" inch
Spessore	28 mm
Spessore	1.102" inch
Tipo	SI
Peso	540 g
Il filo	Filetto destro
Lubrificazione	senza
Imballaggio	1

contatto@123cuscinetti.it

+33 3 59 36 04 90

CRT4 de Lesquin 60 Rue Du Haut De Sainghin 59273 Fretin FRANCE